

BOISE FRONT TRAILS

- ROADS AND STREETS
- PRIMITIVE ROADS
- 8th Street Extension 7.5
Rocky Canyon Road 8.6
Boise Ridge Road 14.5

- MULTI-USE, 4WD ROADS
- E. Shaw Mountain Rd. (Dog-On-Leash) 3.9
E. Highland Valley Rd. (Dog-On-Leash) 1.6
Lucky Peak Rd. (Dog-On-Leash) 6.0

- MULTI-USE, MOTORIZED TRAILS
- 8th Street Motorcycle Trail 5.8
Hulls Ridge Trail 0.5
Femrite's Patrol 3.4

- PEDESTRIAN-ONLY TRAILS
- Hulls Gulch Interpretive Trail 4.4
Freestone Creek Trail (Dog-On-Leash) 0.4
Red-winged Blackbird (Dog-On-Leash) 0.6
The Grove 0.3
Camel's Back Trail (Dog-On-Leash) 1.4
Florence's Trail 0.2
Two Point Trail 1.2
Rim Trail (Dog-On-Leash) 1.0
Peace Valley Overlook Trail (Dog-On-Leash) 0.5

MULTI-USE, NON-MOTORIZED TRAILS

Use with Special Management Restrictions (SMR)

- Trail Name Miles

- 1 Highlands Trail 1.7
2 5-Mile Gulch Trail 3.4
3 Watchman 3.5
4 Freestone Ridge Trail 2.0
5 Orchard Gulch Trail 1.6
6 Heroes Trail 0.8
7 Urban Connector 1.3
8 West Highland Valley (Dog-On-Leash) 1.7
9 Homestead Trail (Dog-On-Leash) 2.1
10 Cobb Trail (Dog-On-Leash) 1.6
11 Tran Trail 1.3
12 Table Rock Trail 1.7
13 Old Pen Trail 0.6
14 Rock Garden Trail 0.6
15 Rock Island Trail 1.7
16 Table Rock Quarry Trail 0.7
17 Quarry Trail 0.8
18 Shoshone-Paiute Tribes Loop Trail 0.8
19 Shoshone-Bannock Tribes Trail 1.2
20 Ridge Crest 1.1
21 Bucktail Trail (SMR: Bikes Downhill Only) 1.3
22 The Ponds Loop (Dog-On-Leash) 0.6
23 Central Ridge Trail 1.9
24 Central Ridge Spurs Trail 1.0
25 Mountain Cove 1.0
26 Military Reserve Connection 0.6
27 Elephant Rock Loop 1.3
28 Sidewinder 1.0
29 Eagle Ridge Trail 1.3
30 Three Bears Trail 4.7
31 Shane's Trail 2.3
32 Cottonwood Creek (Dog-On-Leash) 0.9
33 Toll Road Trail (Dog-On-Leash) 2.0
34 Crestline Trail 2.5
35 Lower Hulls Gulch Trail 2.5
(SMR: EVEN days of month-uphill & downhill foot and horse travel, uphill-only bike travel, ODD days of month-downhill bike travel only; closed to all other uses.)

- 30 Bob's Trail 1.6
31 Corral's Trail 5.4
32 Scott's Trail 1.1
33 Hard Guy Trail 4.9
34 Hulls Pond Loop (Dog-On-Leash) 0.2
35 Gold Finch Trail (Dog-On-Leash) 0.4
36 Red Fox Trail (Dog-On-Leash) 1.5
37 Chickadee Ridge Trail 0.6
38 Owls Roost Trail 0.6
39 Red Cliffs Trail 1.5
40 Kestrel Trail 1.1
41 15th Street Trail (Dog-On-Leash) 0.5
42 Fat Tire Traverse 1.2
43 Hippie Shake 0.5
44 Who Now Loop 1.5
45 Kemper's Ridge 1.0
46 Buena Vista Trail 1.7
47 Robert Smylie Trail 0.9
48 West Climb Trail 1.0
49 Full Sail Trail 0.9
50 Harrison Hollow Trail 1.1
51 Harrison Ridge Trail 1.1
52 Hawkins Loop 5.4
(SMR: Directional Travel Required)

- 53 Trail Connection 0.5
54 Landslide Loop (Dog-On-Leash) 2.2
55 Red Tail Trail (Dog-On-Leash) 3.0
56 Lookout Loop (Dog-On-Leash) 0.3
57 Bitterbrush Trail (Dog-On-Leash) 0.7
58 Chukar Butte Trail (Dog-On-Leash) 4.8
59 Currant Creek Trail (Dog-On-Leash) 1.8
60 Peggy's Trail 4.8
61 Sweet Connie Trail 6.1
62 Dry Creek Trail 7.5
63 Shingle Creek Trail 4.2
64 Sheep Camp Trail 0.8
65 Polecat Loop 5.9
(SMR: Directional Travel Required AND Dog On Leash)

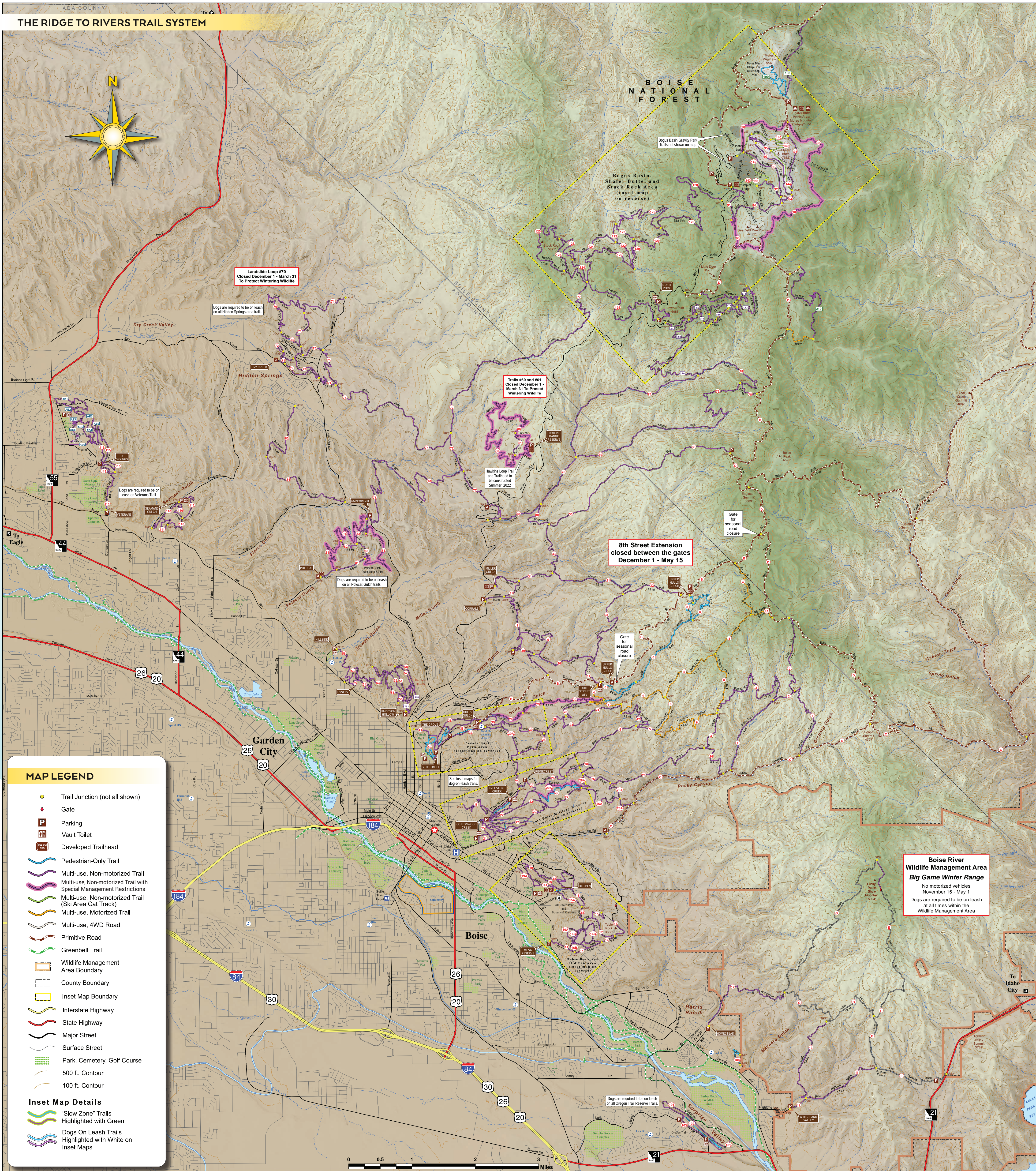
- 66 Doe Ridge Trail (Dog-On-Leash) 0.9
67 Quick Draw Trail (Dog-On-Leash) 0.5
68 Cartwright Ridge Trail 2.0
69 Barn Owl Trail (Dog-On-Leash) 1.4
70 Basak Trail (Dog-On-Leash) 1.8
71 Oregon Trail (Dog-On-Leash) 1.0
72 Seams Gulch Trail 1.8
73 Valley View Trail 0.3
74 Wild Phlox Trail 0.8
75 Big Springs Loop 0.8
76 Veterans Trail (Dog-On-Leash) 1.1
77 Rabbit Run Trail 0.8
78 REI Connection 0.5

NON RIDGE-TO-RIVERS TRAILS

- Ada-Eagle Trails
Land Trust of the Treasure Valley Trails
U.S. Forest Service Trails

E-BIKES (electric bikes) are motorized vehicles and are NOT allowed on NON-motorized trails. However, individuals with disabilities possessing an E-Bike sticker may use e-bikes on selected non-motorized trails. Please contact Boise Parks and Recreation for more information at 208-608-7600.

THE RIDGE TO RIVERS TRAIL SYSTEM



SHAHER BUTTE TRAILS

Additional trails managed by Bogus Basin Ski Area are not depicted on this map. For a detailed trail map, visit www.bogusbasin.org.

MULTI-USE, NON-MOTORIZED TRAILS

- # Single Track Trails Miles
#98 Special Management Restrictions (SMR)
- 91 Deer Point Trail 2.2
92 Shindig Trail 0.9
93 The Face 1.2
94 Elk Meadows Trail 1.4
95 Tempest Trail 0.7
96 Brewer's Byway 1.1
97 Around the Mountain Trail 6.4
(SMR: All users must travel counter-clockwise)
98 East Side Trail 7.1
99 Sinker Creek Trail 3.2
100 DB Connector 0.5
101 Mr. Big Trail 1.8
102 Freddy's Stock Rock Trail 7.0
103 Big Stock Cutoff 0.8
34.3

- # Ski Area Cat Tracks Miles
104 Lodge Trail 1.0
105 Pioneer Trail 0.8
106 Sunshine Trail 0.7
107 Bogus Creek Trail 0.5
108 Cabin Traverse 0.8
109 Packing Trail 0.8
4.6

SALES HELP TRAILS - Proceeds from map sales go to future map printings and trail projects.

RECREATION

PARKS AND

Boise City Parks and Recreation

208-608-7600

Ridge to Rivers Trail Manager

208-493-2531

Ada County Parks and Waterways

208-577-4575

Boise River Wildlife Management Area

208-334-2115

Idaho Department of Fish and Game

Four Rivers Field Office

Bureau of Land Management

208-394-3300

Mountain Home Ranger District

Boise National Forest

208-587-7961

city, county, state and federal agencies listed at approximate vertical elevations:

The Ridge to Rivers Trail System is jointly managed by the following

city, county, state and federal agencies listed at approximate vertical elevations:

RECREATION

SALES HELP TRAILS - Proceeds from map sales go to future map printings and trail projects.

PARKS AND

Boise City Parks and Recreation

208-608-7600

Ridge to Rivers Trail Manager

208-493-2531

Ada County Parks and Waterways

208-577-4575

Boise River Wildlife Management Area

208-334-2115

Idaho Department of Fish and Game

Four Rivers Field Office

Bureau of Land Management

208-394-3300

Mountain Home Ranger District

Boise National Forest

208-587-7961

city, county, state and federal agencies listed at approximate vertical elevations:

The Ridge to Rivers Trail System is jointly managed by the following

city, county, state and federal agencies listed at approximate vertical elevations:

RECREATION

SALES HELP TRAILS - Proceeds from map sales go to future map printings and trail projects.

PARKS AND

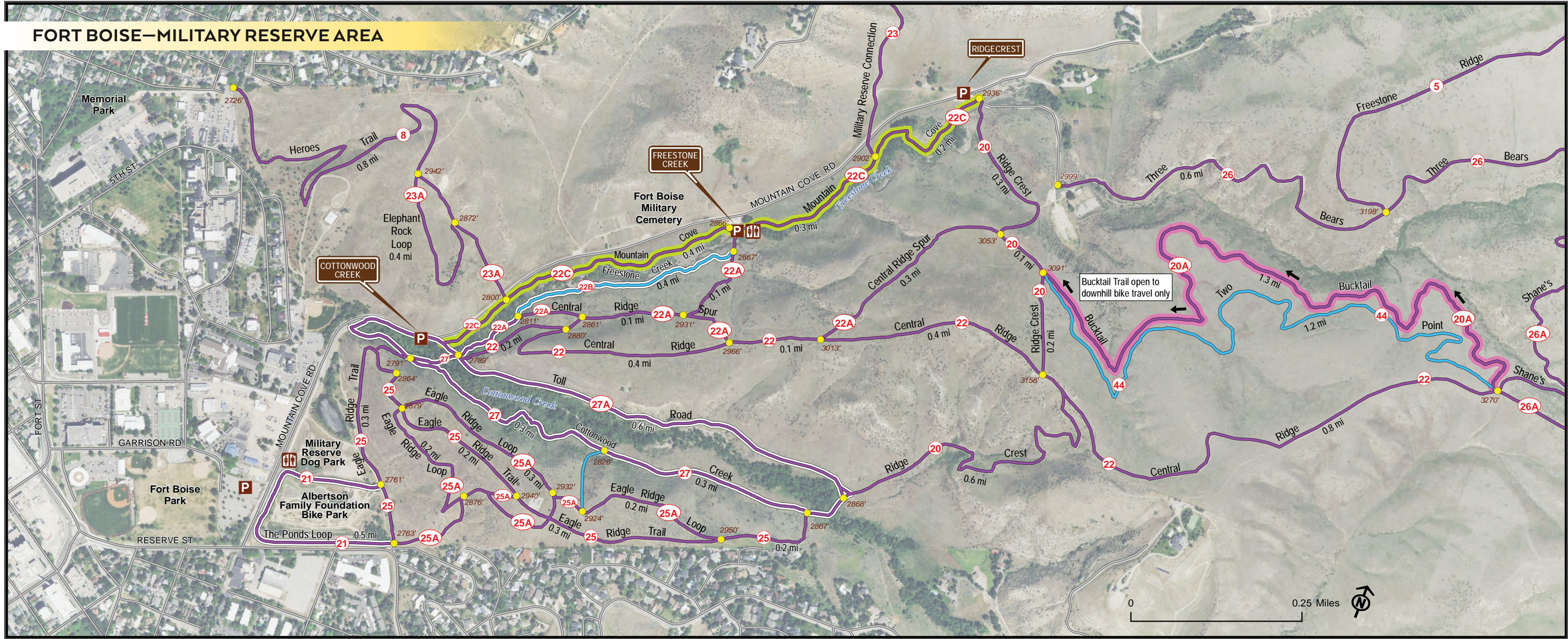
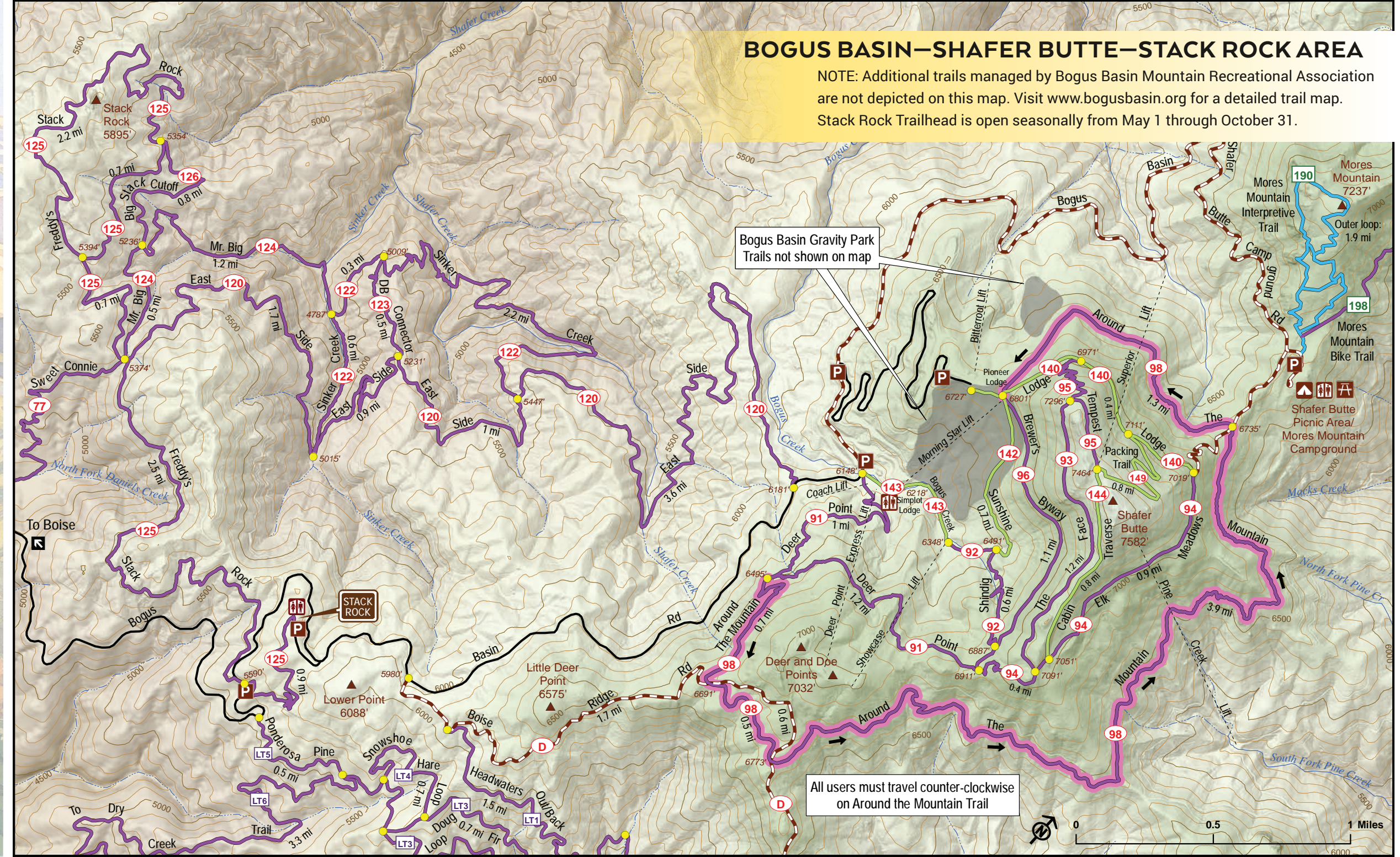
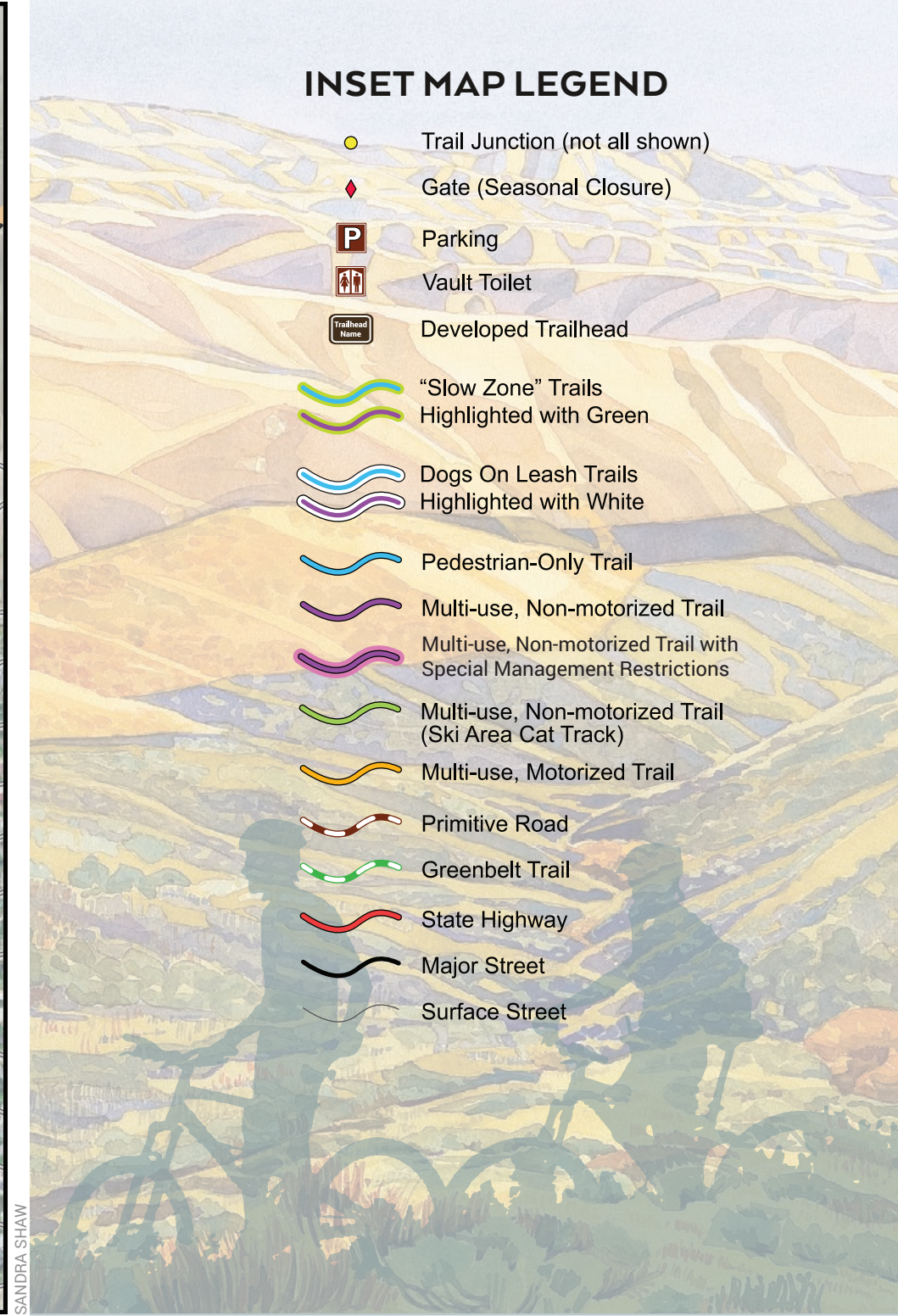
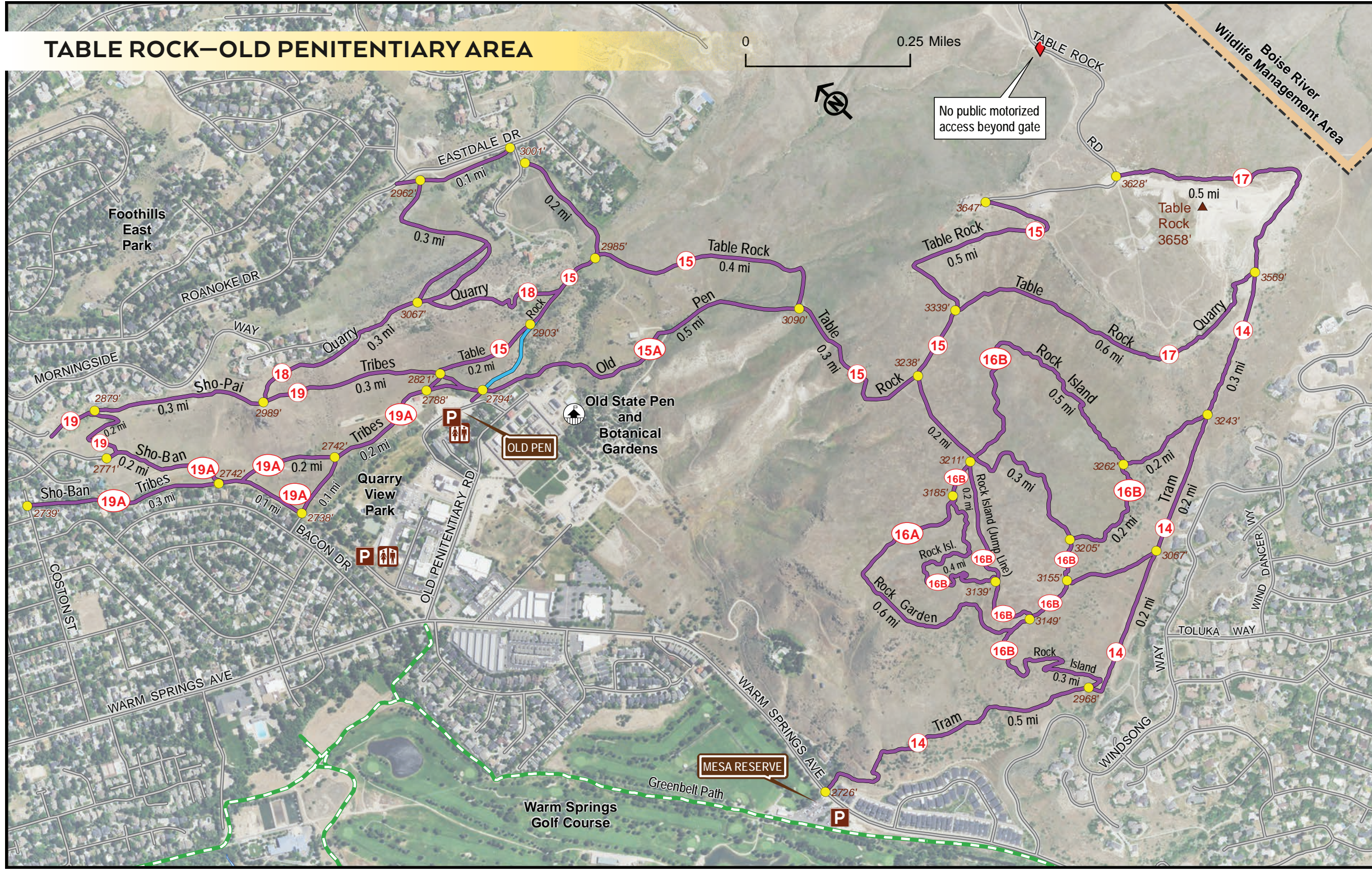
Boise City Parks and Recreation

208-608-7600

Ridge to Rivers Trail Manager

208-493-2531

Ada County Parks and Waterways



OUTDOOR ETHICS

Keep Your Singletrack SINGLE—Hikers and Bikers

- Stay on singletrack trails and roads to prevent loss of native vegetation needed by wildlife.
- Don't hike or ride parallel to the trail.
- STAY OFF OF MUDDY TRAILS! Go early on winter mornings when trails are frozen hard.
- Check the trail conditions on facebook.com/Ridge to Rivers.
- Unauthorized trail maintenance is prohibited.
- Respect posted trail closures.

Promote Etiquette—Mountain Bikers

- Always STOP put your foot down and let non-bikers pass.
- Downhill riders always yield to uphill riders.
- Slow down and announce your presence when encountering others.

Stay on Marked Roads and Trails—Motorized Users

- Operation of a motorized vehicle on private land without the landowner's permission is unlawful (Ada County Ordinance #6-3-1).
- Off-road motorcycles and ATVs must have a current Idaho Off-Road sticker while operating on public land.

Be Safe—All Users

- Know what trail you are on in case of emergency.
- Wear proper attire including bike helmets for riders and proper footwear for hikers.
- Plan for inclement weather—summer thunderstorms are common.
- Avoid the heat of the day during summer months—temperatures may exceed 100 degrees and there is little shade.
- Carry water at all times.

You Are Not The Only Ones Out Here

The Ridge to Rivers trails are in the sagebrush steppe plant community—home (and food) for birds, elk, mule deer, pronghorn, rabbits, sagebrush lizards, badgers, coyotes, bobcats, ground squirrels, permitted livestock and hundreds of other animals. Here are some tips:

- Recognize the critical times of year for wildlife. be overly cautious with your pets from winter through early summer. Use a leash.
- Keep pets from "hunting" on hillsides. Ground-nesting birds will leave their nests if disturbed. Dogs will kill young birds, reptiles and mammals not capable of escape. Also baby rattlesnakes are out in the spring.
- Wildfires destroy native vegetation that is critical to wildlife. Be careful with fire, avoid using fireworks on public lands and check IdahoFireInfo.com to see if any seasonal fire restrictions are in effect. Report wildfires or any illegal fire activities by calling 911 or Boise Interagency Dispatch at 208-384-3400.
- Pack out the garbage you bring in. Report littering.

The Boise River Wildlife Management Area (WMA)

Like the rest of the foothills, the 36,000-acre WMA supports more than 300 species of wildlife. It provides winter habitat for mule deer and elk, and year-round habitat for other species. Motorized access is restricted in the winter. Hunters and trappers are active on the WMA. Dogs are required on leash on the Boise Front segment. Mountain bikes are permitted on designated trails.

Respect Private Land

Thanks to private landowners, many of the trails in the Ridge to Rivers Trail System are available for public use. Please show your appreciation by staying on the marked trails. Straying from marked trails on private land is against the law and considered trespassing. Landowners can revoke established agreements at any time. Future opportunities rest with our collective trail etiquette.

Thank You For Your Cooperation

THE TOP 5 REASONS NOT TO USE MUDDY TRAILS

- When trails are muddy, people use the side of the trail to avoid mud which kills plants and widens our trails—we lose the single-track character of our trail system.
- As trails widen, erosion increases and the trails become difficult to maintain. Trail crews cannot adequately repair this type of damage.
- Drainage structures put in by trail crews to divert water and curtail erosion are trampled and flattened—making them ineffective and increasing erosion along trails. No one likes to travel along deeply eroded trails—so they use the sides creating additional, parallel routes. This again leads to loss of vegetation and eventual increased erosion.
- Deep foot, hoof, tire and paw prints made in mud invariably freeze and become ankle twisting, teeth chattering experiences for those people trying to do the right thing—travel on trails when they are frozen (or dry).
- We maintain and manage the Ridge to Rivers trail system for current and future generations. Continued, irresponsible use of trails will ensure one thing—that our children will not be able to enjoy the experiences that we currently have.

Great Alternatives when trails are muddy:

- Rocky Canyon Road
- Mountain Cove Road
- Upper 8th Street Road
- The Boise Greenbelt
- Boise City Parks

Good Bets with sandier soils for wet or winter conditions:

- Dry Creek Trail #78
- Lower Halls Gulch Trail #29
- Camel's Back Trails #40
- Toll Road #27A
- Freestone Ridge #5

All-Weather Trails for almost every weather condition:

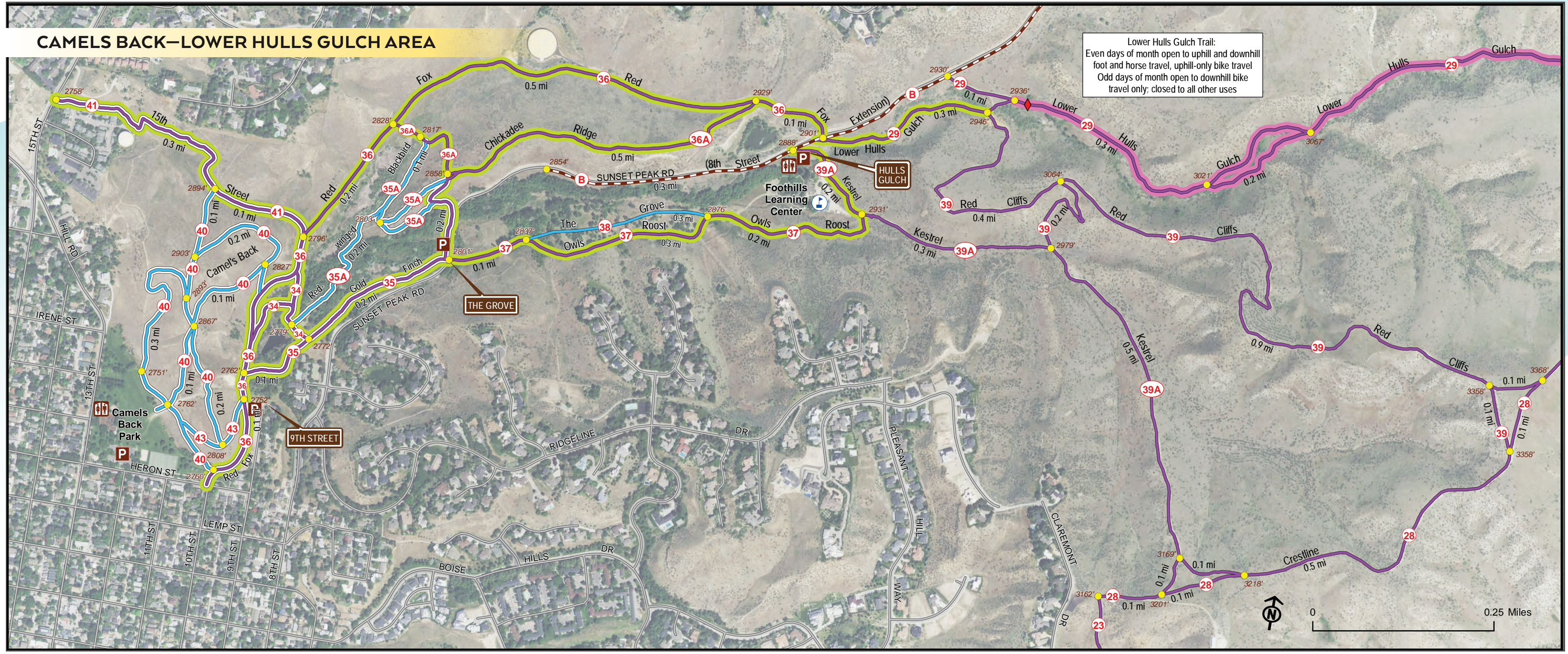
- Shoshone-Bannock Tribes Trail #19A
- Rim Trail #102
- Harrison Hollow Trail #57
- Oregon Trail #103
- Upper Portion of Basalt Trail #101
- Red Fox Trail #36
- Gold Finch #35
- Owl's Roost #37
- Hulls Pond Loop #34
- The Grove #38
- Red-Winged Blackbird #35A
- Mountain Cove #22C

Trails to Avoid during wet, winter, or marginal conditions:

- Sweet Connie Trail #77
- Cottonwood Creek Trail #27
- Old Pen Trail #15A
- Table Rock Trail #15
- Polecat Loop #81
- Big Springs Loop #113
- Ridgecrest #20
- Bucktail Trail #20A
- Central Ridge Spurs #22A
- Red Cliffs #39
- ALL Hidden Springs area trails

Preserve the Integrity of Our Trail System

- Stay off of muddy trails.
- In winter, ride or hike early in the morning when trails are frozen hard.
- Check daily trail conditions on our website or on Facebook to know whether you should be on the trails during winter months.
- If you encounter short stretches of mud, ride or walk straight through or over them. Do not widen the trail.



DOGS ARE WELCOME

You and Your Dog Can Be Great Trail Users

- Know the leash restrictions for the trails that you are traveling on. Failure to comply with leash restrictions may result in a fine.
- Always carry a grocery bag or mutt mitt to pick up your pet's waste and deposit in trash cans. **No one else will do this for you.**
- Recognize the critical times of year for wildlife—be overly cautious with your pets.
- Keep pets from "hunting" birds on hillsides.
- Controlling your pet means keeping it from interfering with other trail users, or causing erosion by digging on hillsides or stream banks.

"Controlled Off-Leash" Trails—dog owners still must carry a leash and waste bag with them, and their dogs should not be further than 30 feet away at any time. Respect for others and wildlife will go a long way in keeping this option available to you and your pet.

"On-Leash" Trails—your dog must be on-leash at all times (all of these trails are clearly signed):

- E. Shaw Mountain Rd - E
- E. Highland Valley Rd - F
- Lucky Peak Rd #8
- W. Highland Valley #11
- Homestead #12
- Cobb #13
- The Ponds Loop #21
- Freestone Creek #22B
- Cottonwood Creek #27
- Toll Road #27A
- Hulls Pond Loop #34
- Red-winged Blackbird #35A
- Gold Finch #35
- Red Fox #36
- Camel's Back #40
- 15th Street #41
- Landslide Loop #70
- Red Tail #71
- Lookout Loop #72
- Bitterbrush #73
- Chukar Butte #74
- Currant Creek #75
- Polecat Loop #81
- Quick Draw #83
- Barn Owl #85
- Basalt #101
- Oregon #103
- Rim #102
- Peace Valley
- Overlook #109
- Veterans #114

www.ridgetorivers.org or www.ridgetorivers.org/trails/interactive-map/

Be a responsible trail user, before you go out, check the trail conditions on facebook.com/Ridge to Rivers

Determine what trails are appropriate to use during wet spring, fall and winter months.

Want this map on your mobile device? Download the free app.

Avenza Maps
Get the App. Get the Map.*

Want to use this map on your mobile device? Download the free app.

2. Download this map (\$4.99)