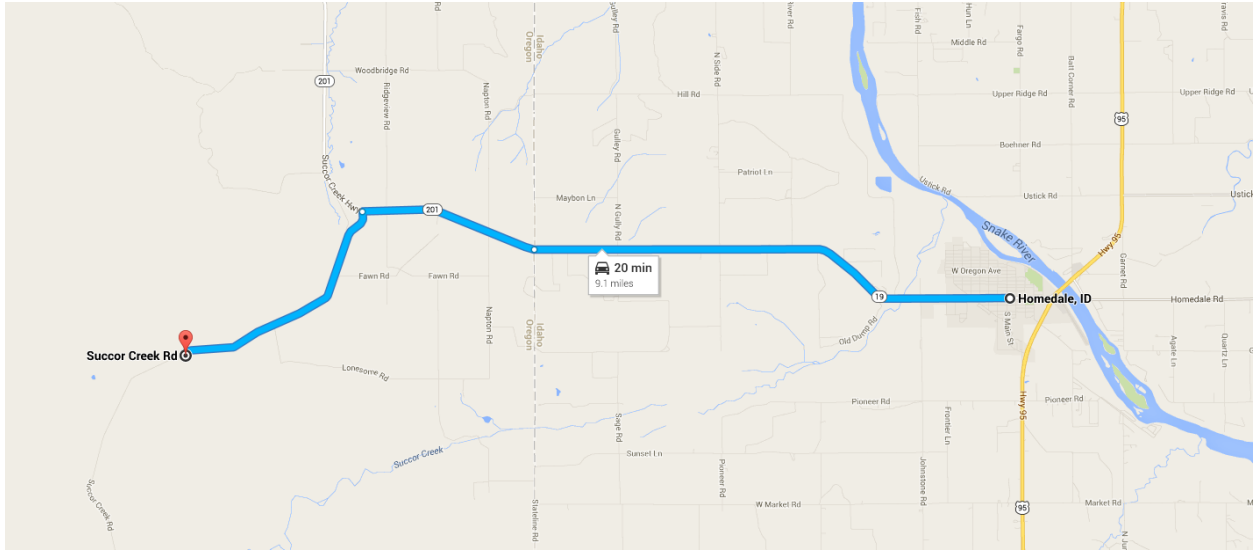
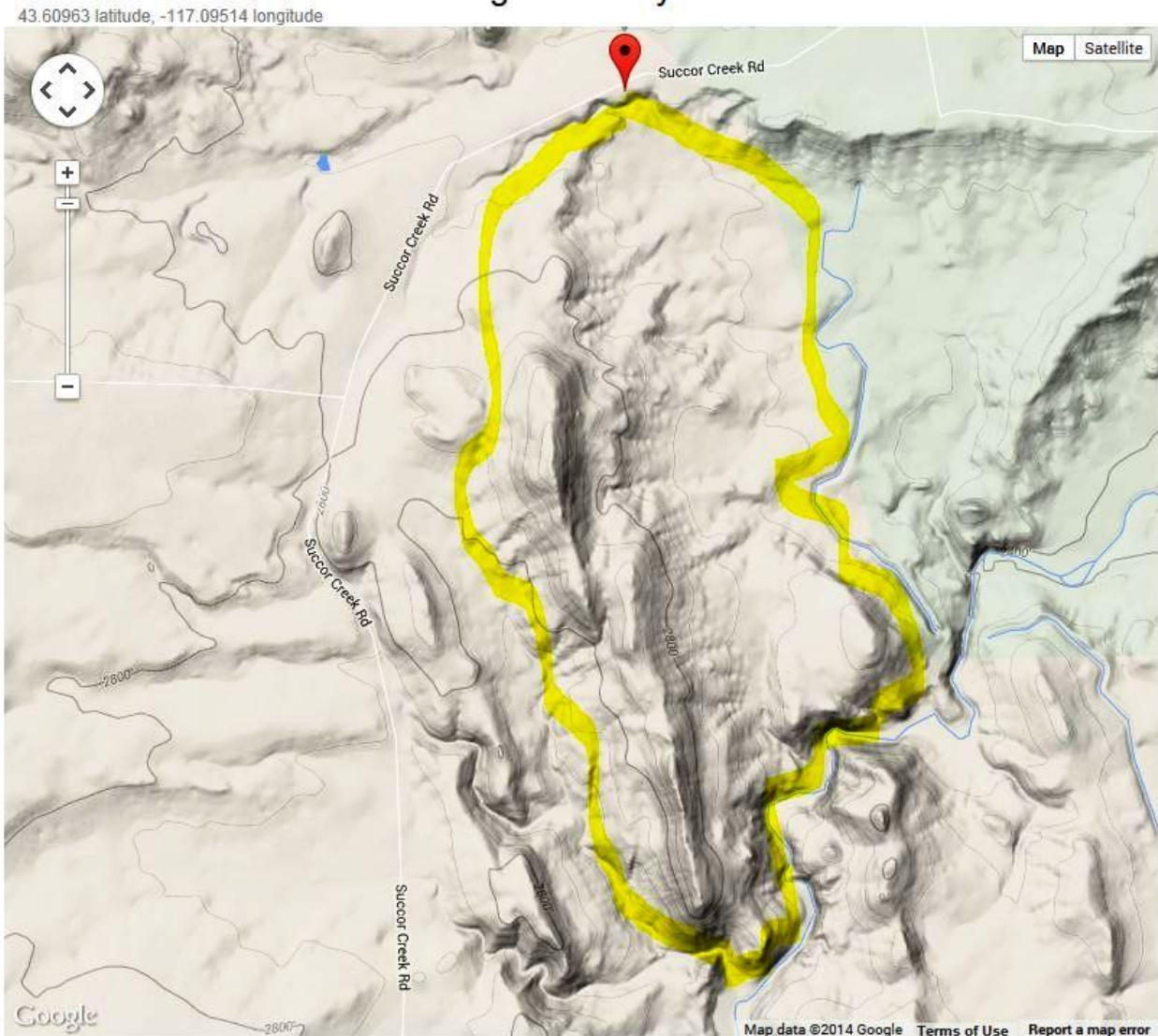


## Succor Creek – Power Line Loop Ride (Spring, Fall or Winter Ride)



58 miles for Emmet, or 9.1 miles from Homedale if driving from another location is a great spring, fall or winter ride. Once on Succor Creek Road, drive through the ranch, over the cattle guard and follow the road almost to the high tension power lines. Look for a pull off that will hold about 10 trailers. To the east is a valley with a jeep road that is the start of this ride. GPS 43.6096 -117.0951





Start the ride east, dropping down off the bench you are parked on and ride a jeep road until you come to a canal that runs north south, stay west of this canal, and ride along the fence line until you get to a dam. The ride then turns south west following the river through a canyon with great rock formations, caves, pools of water for the stock, and it is likely you will spot wild life. Follow the jeep road along the river until it crosses the river and "Y's". Take the right fork which heads up hill in a north westerly direction. You will pass a ranch to your south. Follow the jeep trail or one of the cattle trails north back to your trailer. Loop takes around three hours if you keep moving more if you stop, take picture or have lunch by one of the pools. This is a great ride for riders of all abilities and for out of shape horses or riders. Some of the sections of jeep road are rocky.

Laurie Bryan lead this ride for the chapter on October 10, 2014 and the members who attended wanted it added to our directions page.