

Eagles Nest Trail – Cascade Idaho

Eagles Nest Trail



Eagles Nest Trail Project - 2015 Trails Program Accomplishment

District: Cascade

Trail No. 11104

Background:

The Eagles Nest Trail was inspected on November 13, 2013. The trail was inspected from the boundary of Idaho State Land and Boise National Forest where the 400 road parallels the trail. The Eagles Nest trail is a moderate to high use trail located in a remote area on the Cascade Ranger District.

Purpose and Need:

The project is located approximately 1 mile from a parking area along the 400 road. The trail crosses several small ridges and descends to the first stream and Stream Environment Zone (SEZ). The SEZ area is approximately 15 yards long. The trail then ascends up and over a small hill to the next SEZ. The length of the second SEZ is approximately 53 yards.

The trail ascends out of the marshy area and heads northeast. The approaches to both areas are very steep and incised. The grades exceed 25 percent and there are large quantities of sediment entering the SEZs and the perennial stream that runs across the trail. The wet areas are highly impacted and have significant trail braiding from users trying to find a better route.

The total length of the project is approximately 425 yards.

The reconstruction of this section will improve public safety, reduce significant ongoing resource damage, and improve the overall user experience.

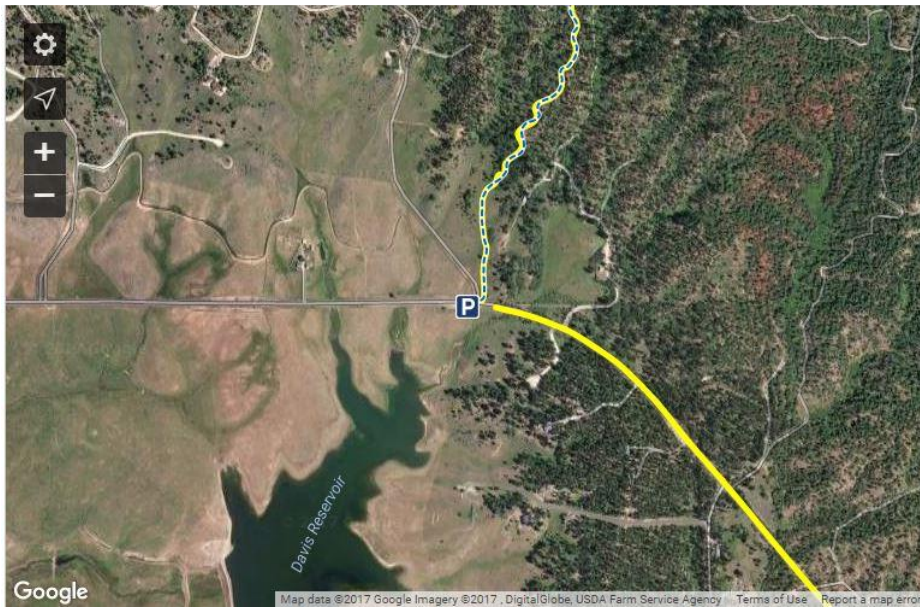
Completed Repair: The project is currently under construction. The estimated time of completion is mid-October of 2015.

- ▶ *Realignment and construction of approximately ¼ miles of new trail*
- ▶ *Decommissioning and restoration of ¼ miles of existing trail*
- ▶ *Construction of two Puncheon/Causeways approximately 70 yards long*

The project was greatly assisted by Lucky Peak Helitack.



Trail Head is 7 miles east of Cascade on Warm Lake Road.

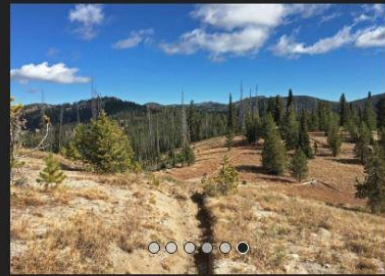
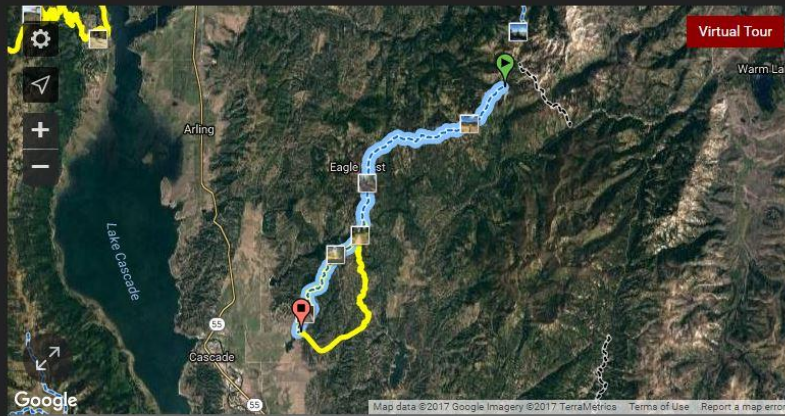


Parking Lot at old weigh station
Shared by Duane Zworld

Eagle's Nest Trail 111

★★★★★ 6 votes Areas > ID > Southwestern Idaho > McCall

[Improve This Page](#)



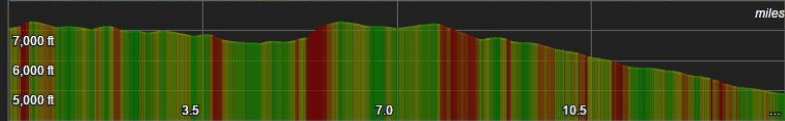
14.1 Miles
Singletrack

1,506' Ascent
-3,692' Descent

7,277' High
4,856' Low

7% Avg Grade (4°)
30% Max Grade (16°)

Unknown Update



Trails on Cascade Ranger District

