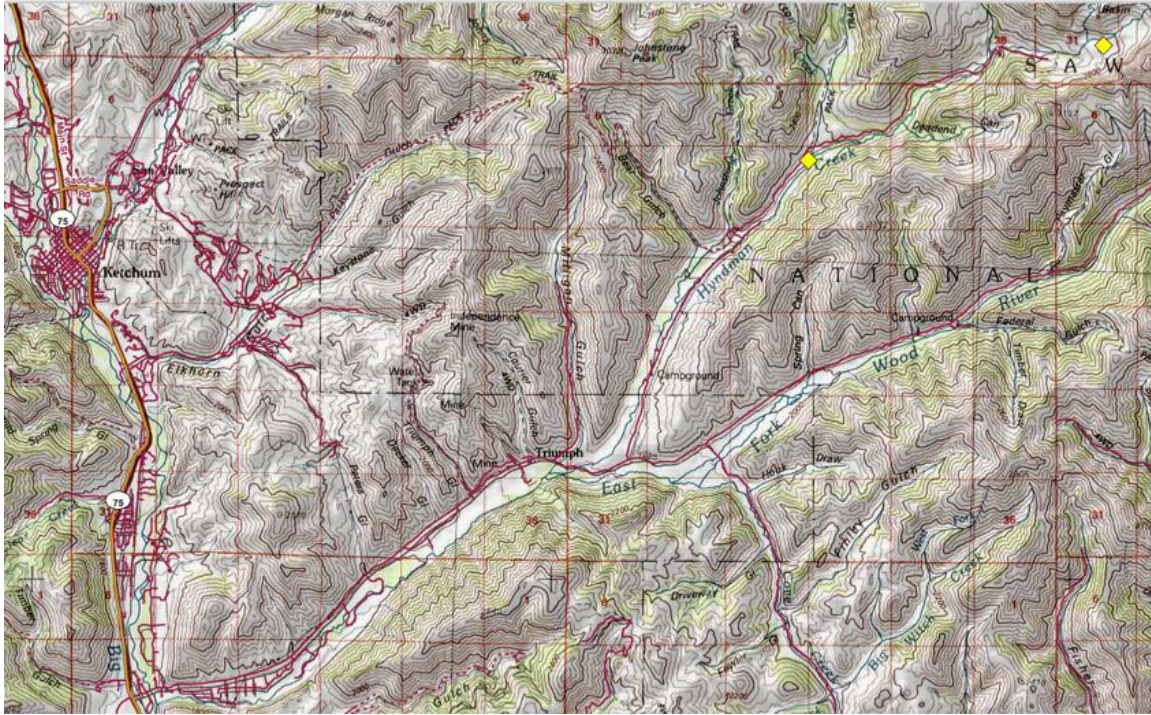
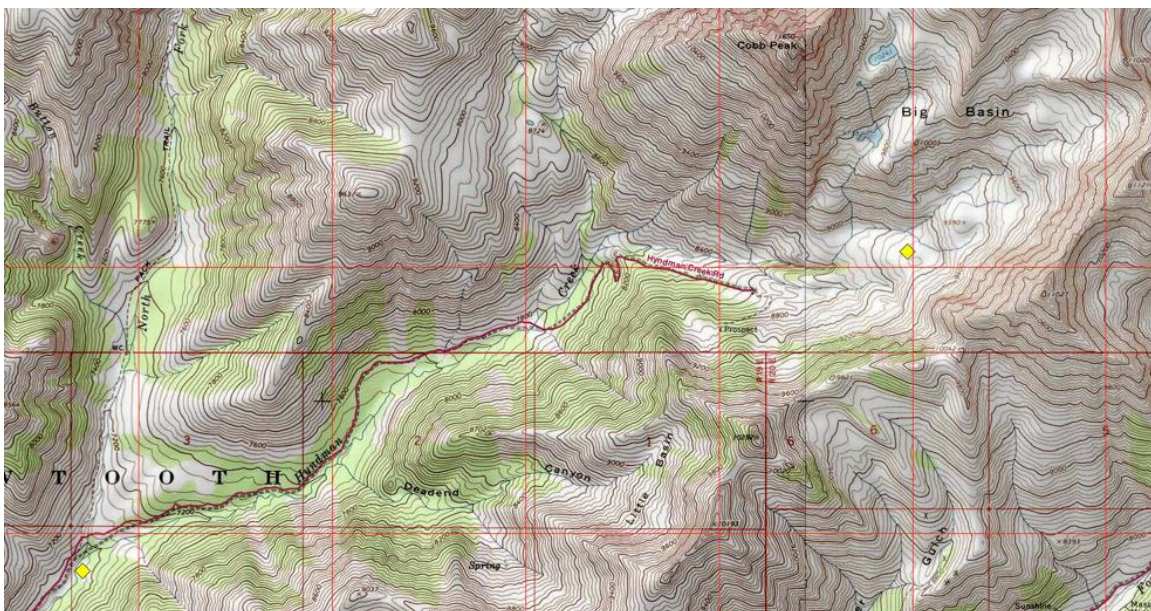


Big Basin – East of Ketchum Idaho – Labor Day Weekend – Jake Lemon

This summer, I discovered a Shangri-La in what used to be my back yard!! The place is called Big Basin, in the Pioneer Mountains, east of Ketchum/Sun Valley.



I would like to organize a 2012 SBBCH outing to this place on Labor Day Weekend. The location is illustrated below. On Map 1, east of Ketchum, the 1st yellow diamond is the TH corral.



The 2nd is the destination. The drive is a little longer than say Grandjean, but it's all relatively flat, highways driving with only about 5 miles of easy gravel road to the TH.



I have in mind an outing with a bit of a photography theme. There are some excellent opportunities for the classic pack string with jagged peaks in the background type photo.



There is also a mind boggling array of incredible scenery photo opps. Our camp would be on about a 5 acre flat with a nice creek & plenty of grass.



On Labor Day weekend, the major draw for hikers' mountain bikers is the next basin to the north, so I don't think we would have much of a conflict with them. By the time I thought of putting this SBBCH idea forward, my camera had run out of memory (I was busy!!), so I don't have any pix specific to showing the way, but here are a few from the area;