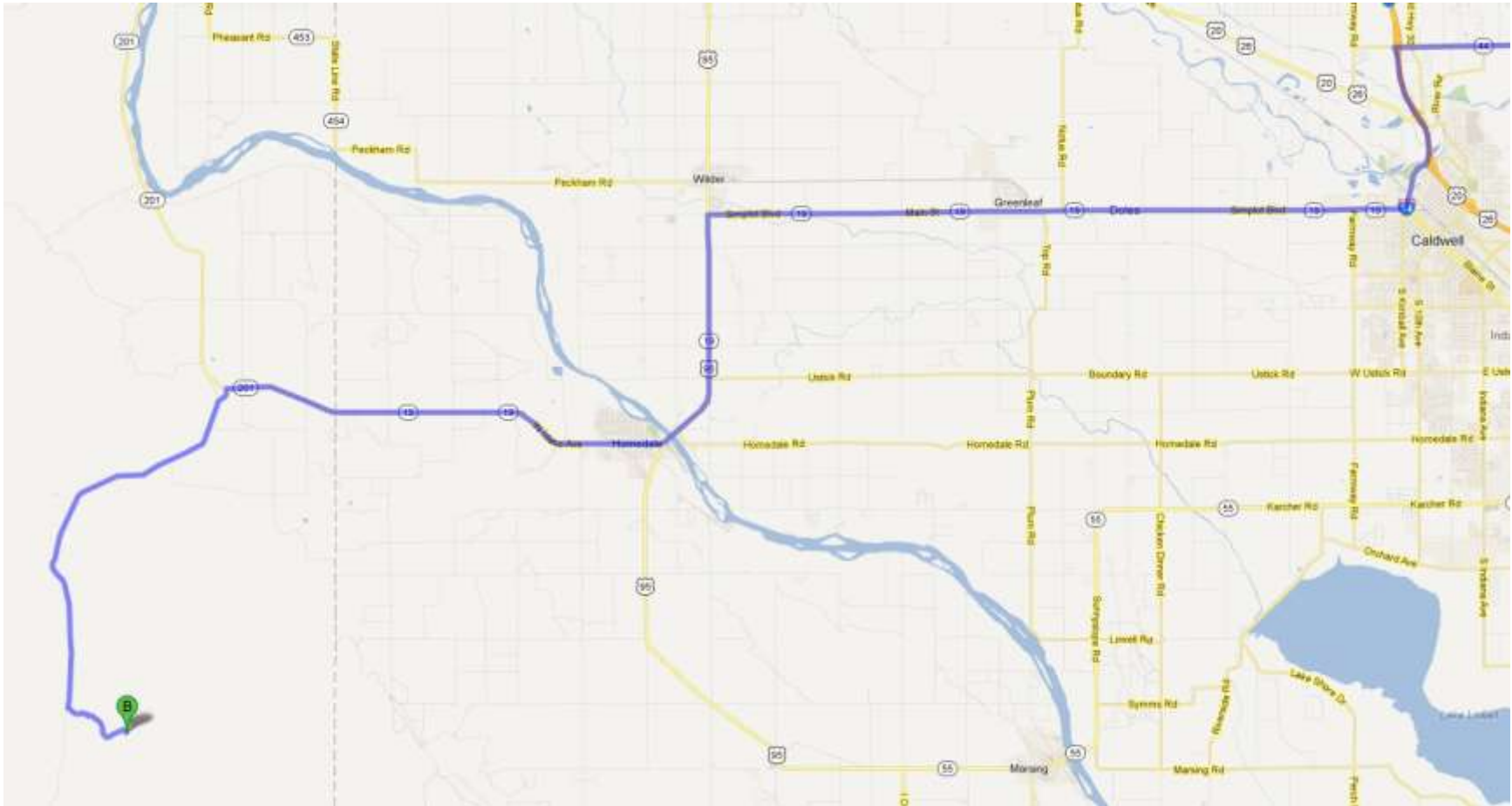


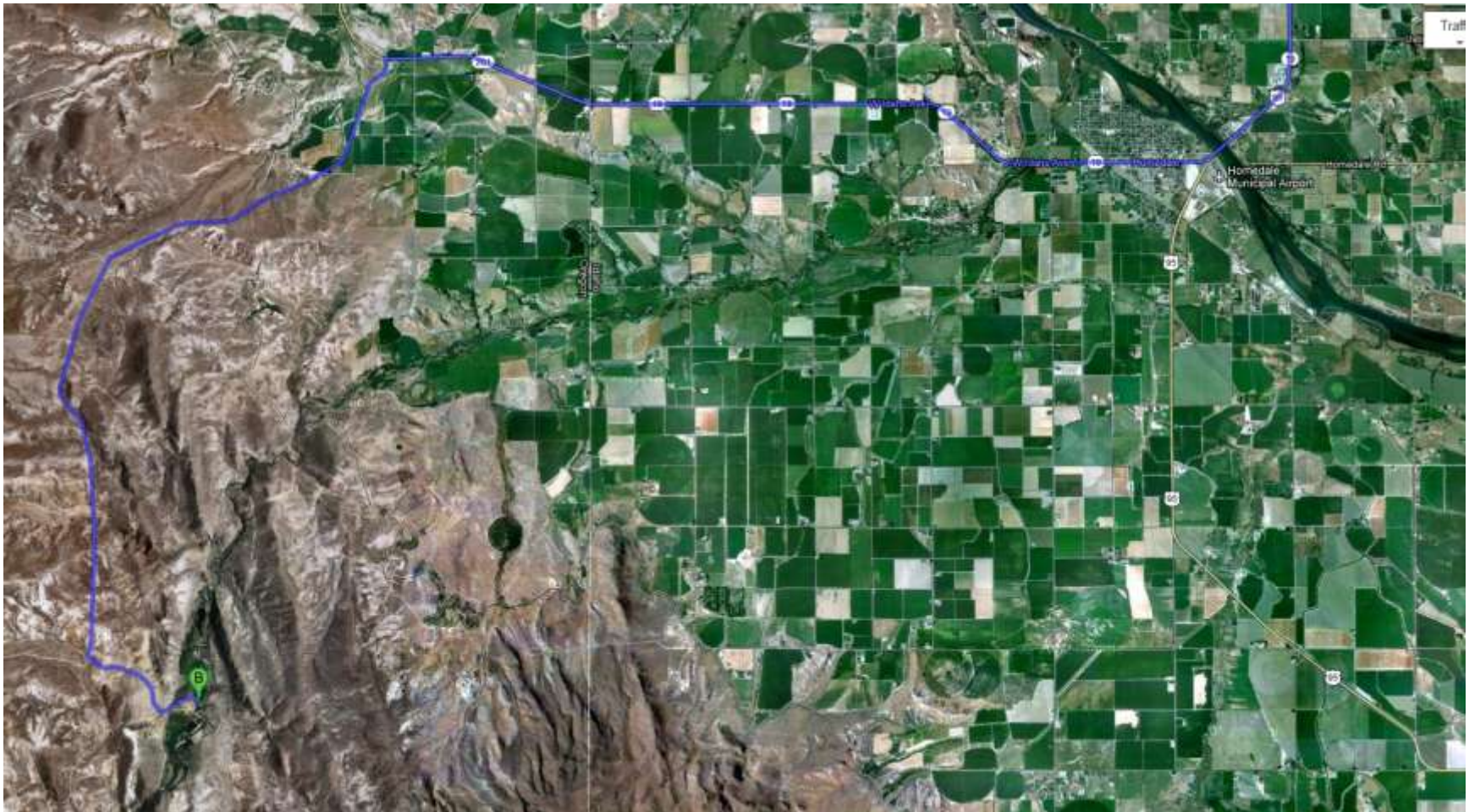
Succor Creek Natural Area



67 miles from Emmett, about 90 minute drive via Homedale. Once on Succor road, an unpaved road with some washboard sections drive about 15 miles to a excellent parking area for trailers with stock water available. Stay on the main road as there are lots of interesting branches that will entice you to want to explore.

http://www.freeguidetonwcamping.com/Oregon_Washington_Main/Oregon/Southeast_OR/Succor_Creek.htm

In downtown Homedale continue straight on Highway 95 until it becomes Highway 19 (do not turn left on Main Street). Follow Highway 19 for approximately 6.8 miles to Succor Creek Road. Turn left onto Succor Creek Road and follow for approximately 14.3 miles to the campground. Succor Creek Road is unpaved. Some stretches of Succor Creek Road will require you to slow to as little as 5 mph. It is not a well maintained road.



SUCCOR CREEK STATE NATURAL AREA PHOTOS



The July, 2002 Trimbley Creek fire brushed up against the edge of the park, but caused little damage. Many grasslands benefit from regular, low-intensity fires.



The area around Succor Creek is cleaved by deep gorges. You can clearly see the effect of terrain on the July, 2002 Trimbley Creek fire.





This foot bridge provides access to the tent camping sites at Succor Creek State Natural Area



The campground at Succor Creek State Natural Area from the top of the canyon



The rock formations at Succor Creek State Natural Area are unforgettable
