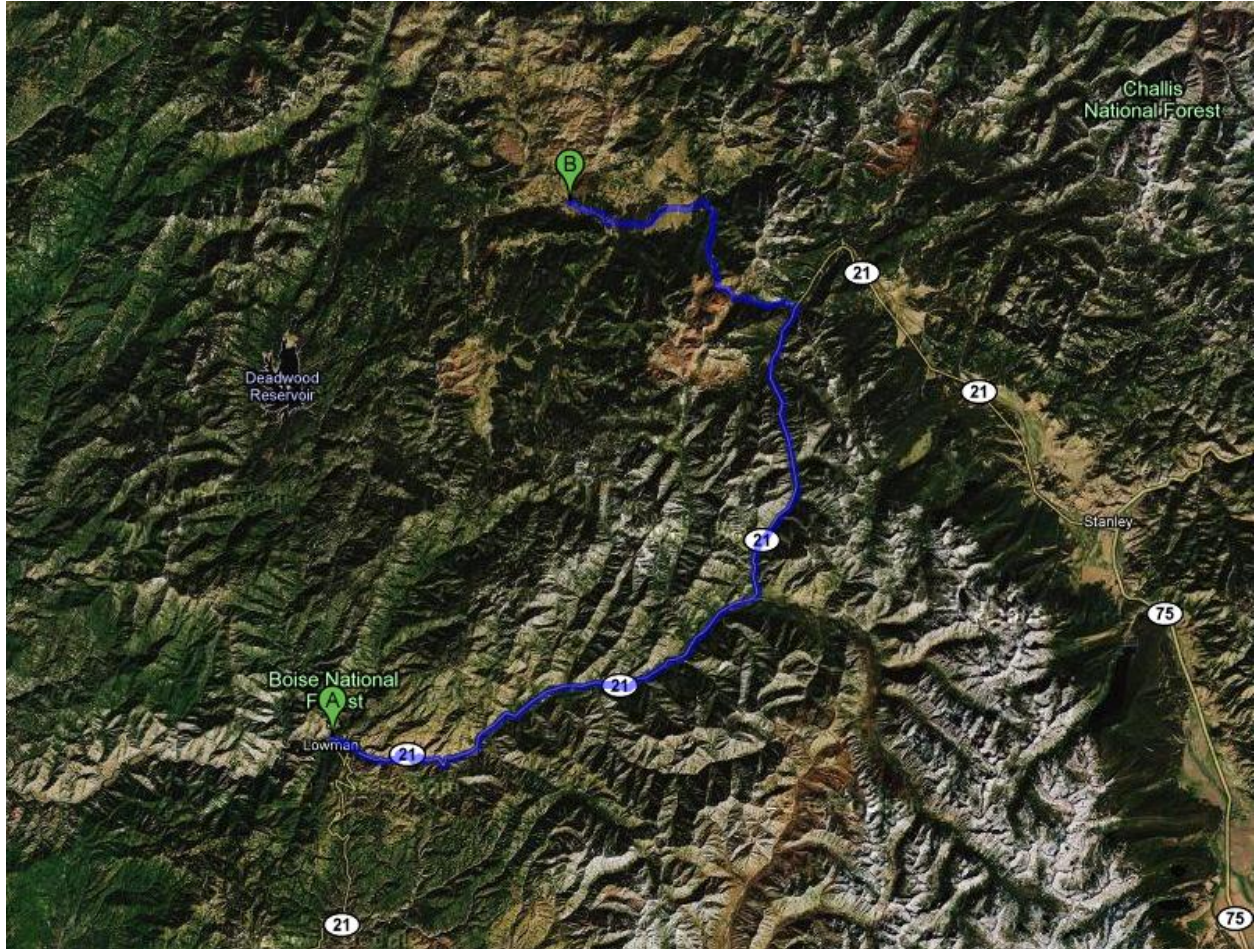


Directions from Lowman, ID to Elk Meadows Trail Head

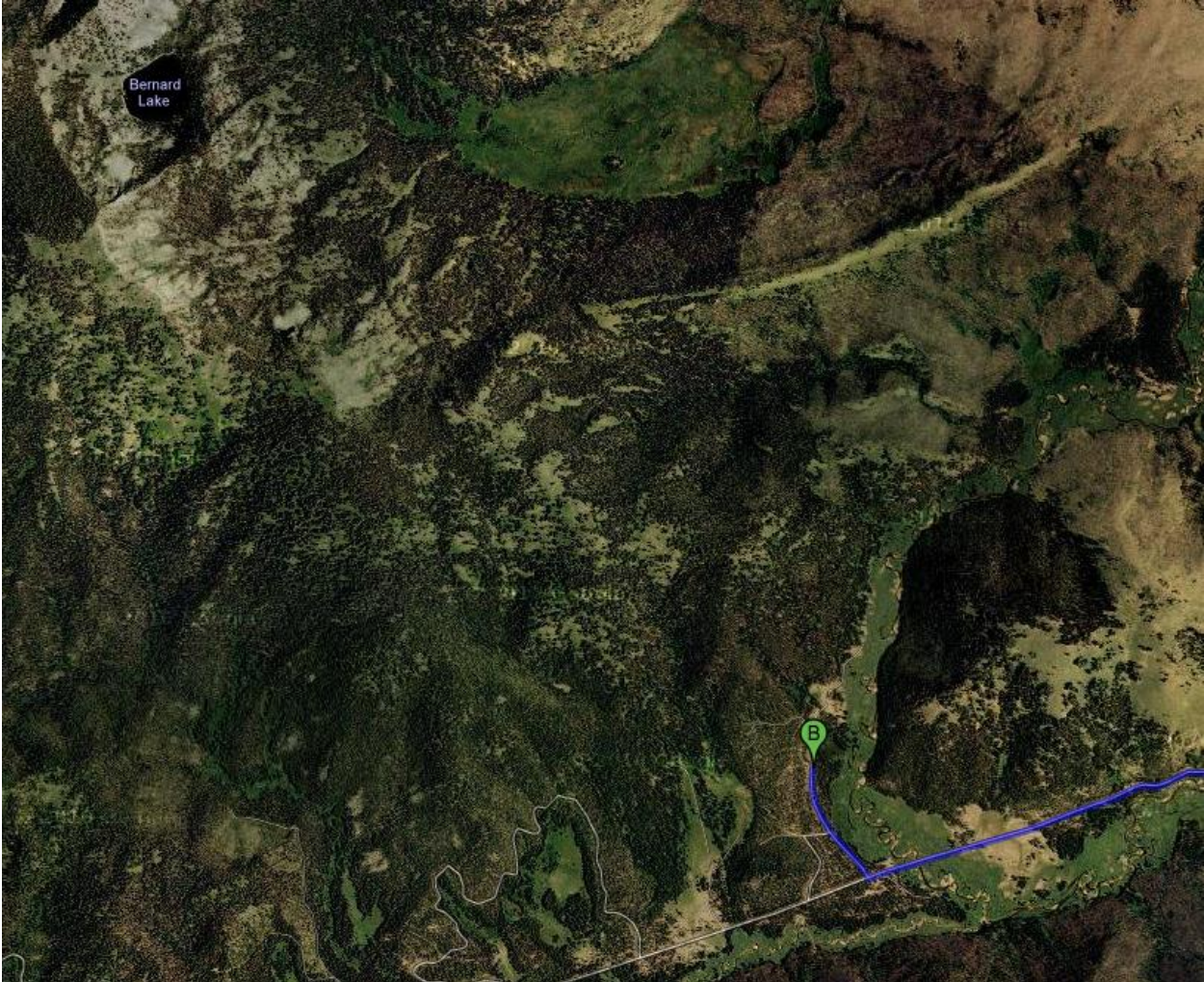
Lowman to Elk Meadows (55 miles ~90 minutes)



Lowman, ID

1. Head **east** on **Banks Lowman Rd** toward **Lowman Home Rd** 0.4 mi
2. Take the 1st left onto **ID-21 N/Ponderosa Pine Scenic Route** 36.6 mi
3. Turn left at **Bear Valley Rd** 3.0 mi
4. Continue onto **Nat for Dev Rd 579/Nat for Dev Rd 582** 9.0 mi
5. Turn right at **Bear Valley Rd/Nat for Dev Rd 579** 6.6 mi
6. Turn right

Elk Meadows area – Frank Church Wilderness



Trail head details – Lots of trailer Parking

Trail heads due north with a number of good camp sites along the creek for the first 6 miles or so, with a nice ride over to Bernard lake an easy day ride. Before the fire there were some big fish in the lake. Fishing in the Creek is not allowed.

